

# Canso Causeway

"Air Lorg Nan Eilean" , The Road to the Isles



Bridge:  
 Length 93.88 m 308 ft  
 Weight 1,379 tonnes 1,520 tons  
 Pivot 0.965 m 38 in

Canso Causeway 50th Anniversary.  
 Photo by Barbara MacKinnon.



## Canso Causeway and Canal 1952- 1955

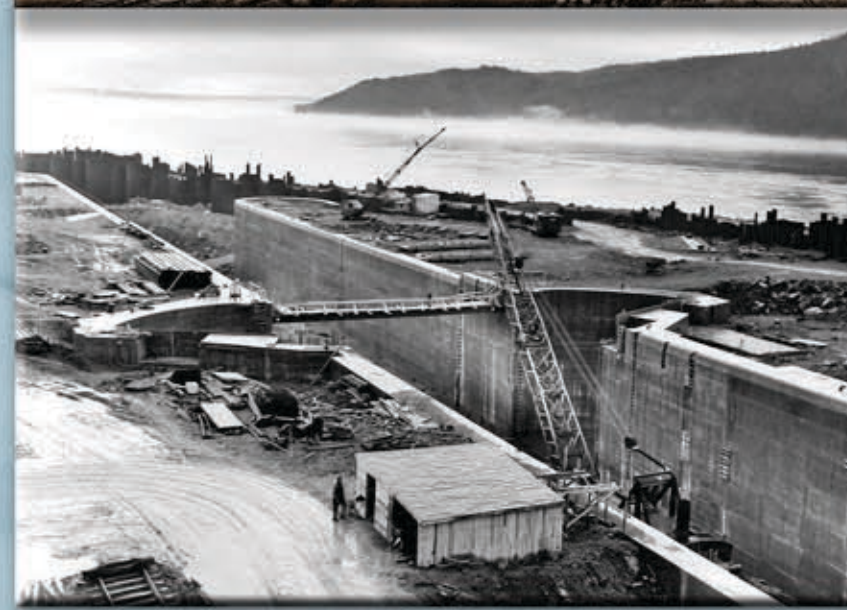
### Canso Causeway:

Length through water	1,371.60 m	4,500 ft
Length from Auld's Cove	2,134. m	7,000 ft
Surface width	24.38 m	80 ft
Widest point on ocean floor	262. m	860 ft
Depth at deepest point	66.14 m	217 ft
Rock fill	9.1 million metric tonnes	10,200,000 tons

### Canso Canal Lock:

Length (gate to gate)	243.8 m	800 ft
Width	24.4 m	80 ft
Depth (bottom to top of wall)	15.2 m	50 ft
Draft	8.5 m	28 to 30 ft

Total cost of project was \$23 million



Making a Living in the Strait of Canso Area since 1784.

### Transportation and Communication

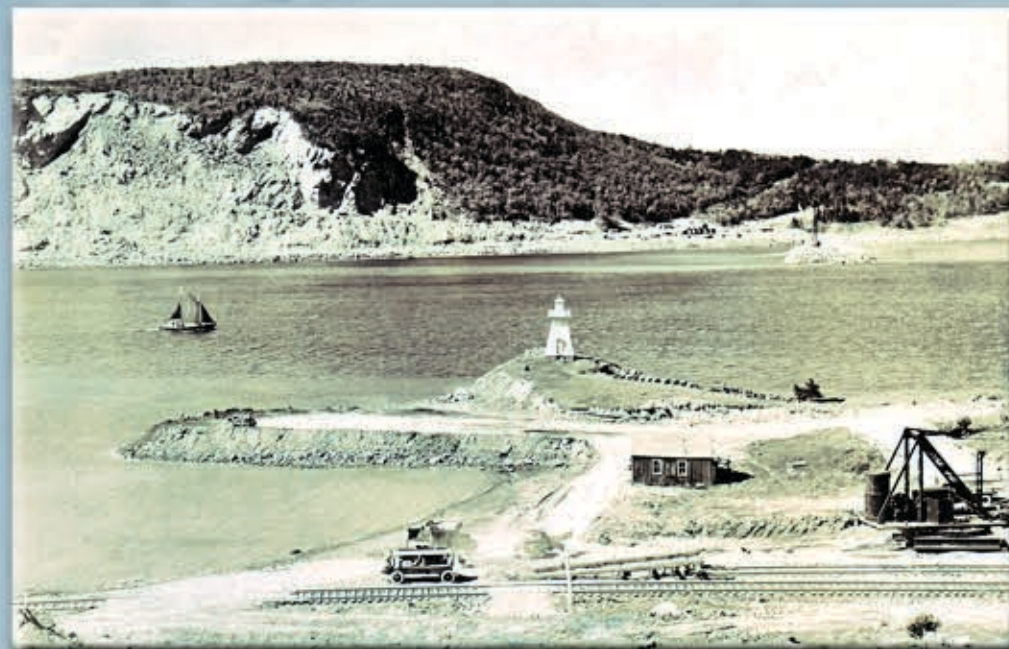
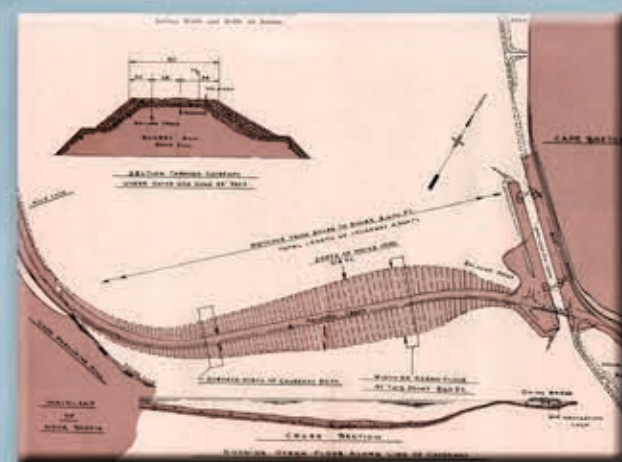
Early Years: Stage Coach Lines, Ferries, Mail Service Link, Telegraph Offices, American Consular Offices, Railroads, Boston Boats and Coastal Freighters, Newspapers.

Later Years: Railroads, Canso Causeway and Canal completed in 1955, Nova Scotia Community College and Nautical School, Post office, Pilotage and Tug boats, Ship Chandlery, Airport, Trucking, Newspapers, Radio Station & Cable TV, Telephone Office.

### Commerce and Industry

Early Years: Grist Mills, Blacksmith, Shipbuilding and Repairs, Coal Pier, Fishing and Fish Plants, General Stores, Forestry, Banks, Accommodations.

Later Years: Pulp and Paper Mill, Oil Refinery, Heavy Water Plant, Gypsum Mining and Exporting, Manufacturing Wallboard, Power Generating Plant, Ship and Oil Rig Maintenance and Repairs, Rock Quarrying and Shipping, Concrete and Paving Plants, Transshipping of Oil, Shipbuilding, Accommodations and Restaurants, Car Sales & Service, Banks, Retail Stores, Call Centre.



## Canso Causeway and Canal Timeline:

- Project announced: October 9, 1951
- Construction begins for Causeway July 1952
- Construction begins for Canal April 1953
- Causeway reaches Cape Breton December 10, 1954
- 10.2 million tons rock fill completed December 31, 1954
- Official opening August 13, 1955

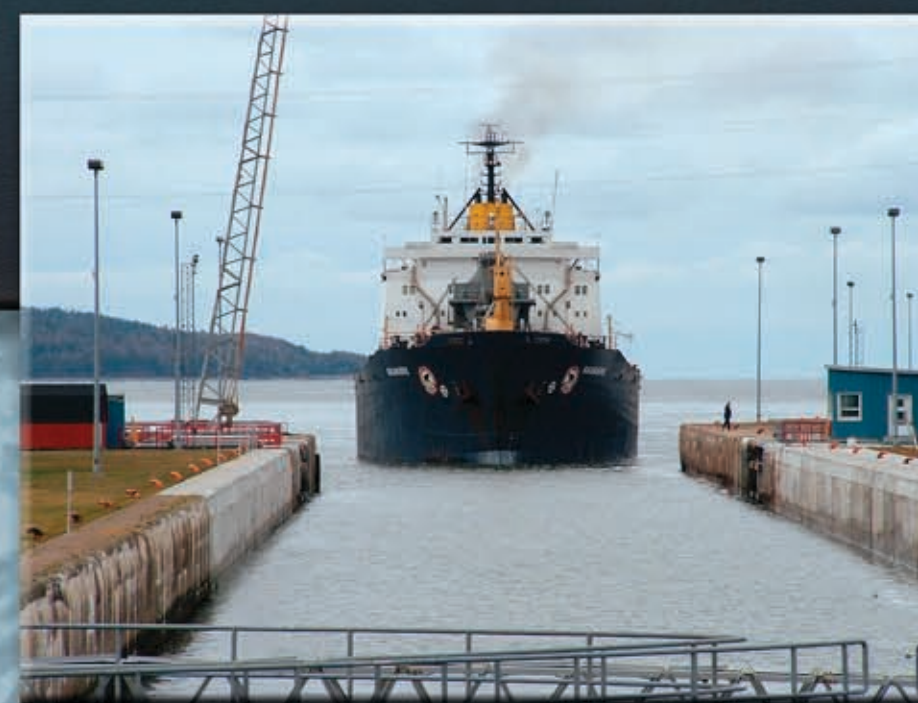


Photo by Jeff Graves,  
 Jaguar Communications.



Photo by John MacLeod Langley

NewPage Corporation(formally Stora) - Point Tupper Mill Photo by Airscapes



Text: Yvonne Fox  
 Photos Gut of Canso Museum collection, Port Hastings, NS  
 Photo restoration and layout by MV Design, www.wdmv.ca

Property of Inverness County TransCanada Trail Project.