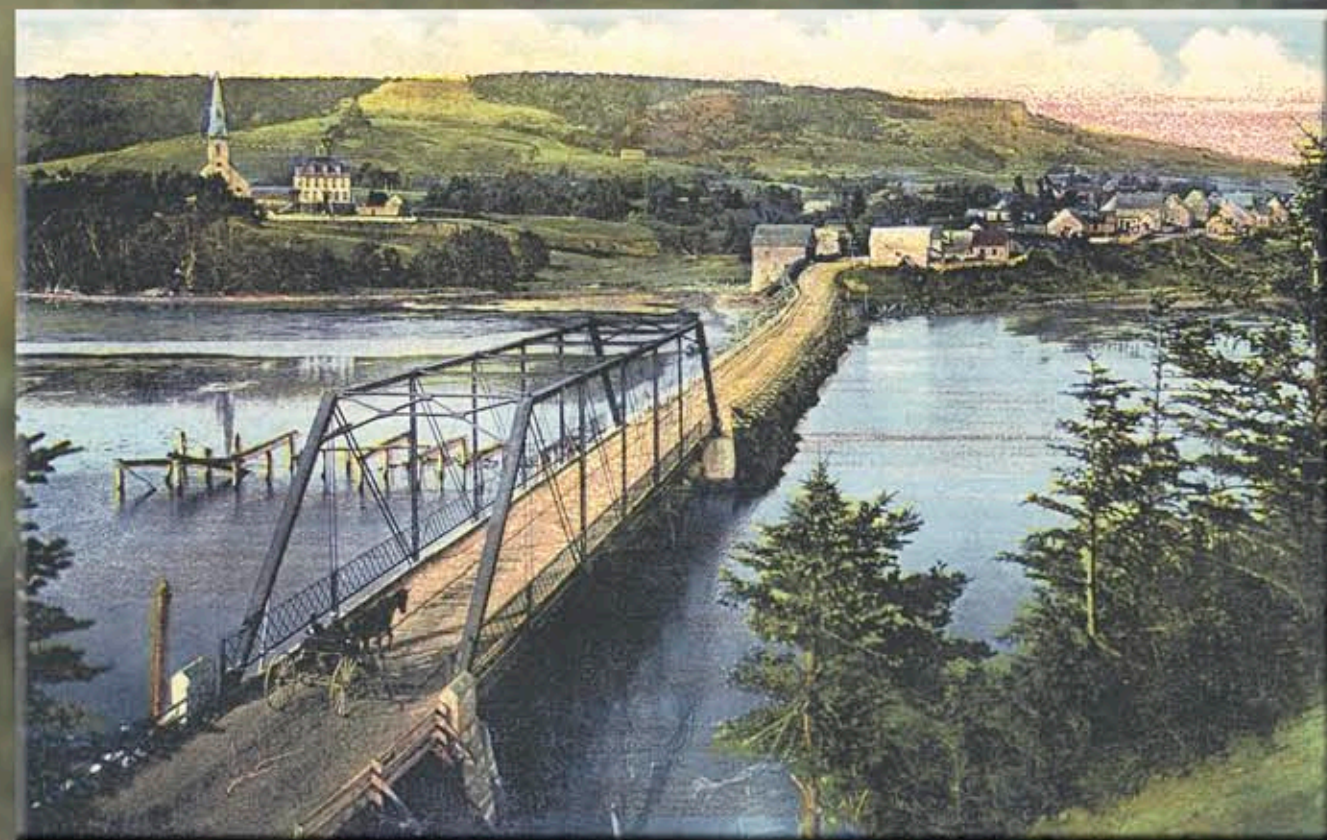


An Drochaid

The Bridge



Mabou bridge built in 1893. Note the "steamer" at dock where merchandise was delivered from Port Hastings, Pictou and Halifax. The wooden boardwalk ran through the village. The remains of a rail spur to the pier at North East Mabou is visible on the far shore.



Mabou bridge 1902: Mr. & Mrs. Charlie Cox are in the buggy in this postcard.



Merchant J.D. Cameron and his family operated the Cameron House hotel for nearly a century from the 1850s."



St. Mary's Church and St Joseph Convent postcard, circa 1953

St Joseph's Convent was constructed in 1887. The new convent (brick building) opened in 1952, and is now a retreat centre.



Altar built and guided by Tom Burke, master carpenter, circa 1920 Mabou. The building at right is the current An Drochaid museum.

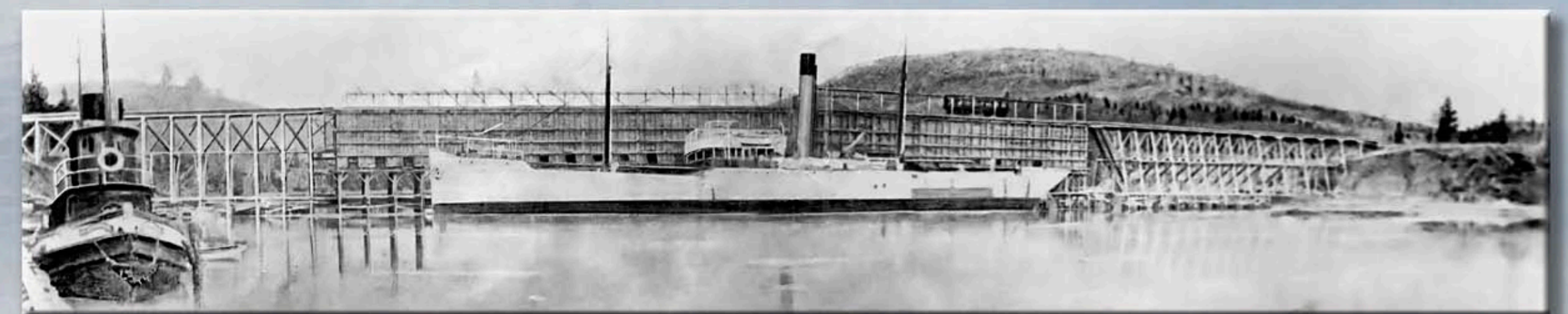
Glebe house, 1940' pastors residence



Repairing the church steeple after being struck by lightning, 1919-1921. When St. Mary's Church opened in 1897, it could hold 1,000 people.



Pioneer cemetery and original site of St Mary Magdalen Memorial Chapel, (Catholic) at West Mabou. Built by Tom Burke. Services were held in English and Gaelic. In 1967, the Chapel was moved to "Mary's Hill", where it became a shrine and was operated by our Lady of Seven Sorrows, a Dutch order of brothers who also started a boarding school in Mabou.



Pier at North East Mabou 1905-1906, 0.8 km (half a mile) from Mabou. The pier was built to load boats with coal and gypsum. The mines closed around that time due to flooding.



Text: Mabou Rivers Trail Committee
Photos: An Drochaid museum, and Donald Cameron.
Photo restoration & layout: MV Design, www.wdmv.ca

Property of Inverness County TransCanada Trail Project.